



# **WATER & WASTEWATER TREATMENT DESIGN & BUILD SOLUTIONS**

# **HOT WATER, STEAM & SOLAR TURNKEY SOLUTIONS**

**Al-Maymanah Contracting Co.**

Head Office: Ring Road, Rawabi Dist., P.O. Box: 41113, 21521 Jeddah  
Riyadh Office: Al Narjis Trading Center, Abi Bakr As Siddiq Rd, An Narjis, Riyadh  
Kingdom of Saudi Arabia  
Tel: +966 12 621 3997 / 621 3667 / 621 7465 - Fax: +966 12 621 3017  
[www.maymanah.com.sa](http://www.maymanah.com.sa) [info@maymanah.com.sa](mailto:info@maymanah.com.sa)  
CR 4030143530 VAT 301261667100003

## **COMPANY PROFILE**

# EFFICIENT SOLUTIONS

# INDUSTRY LEADING EXPERTISE

شركة الميمنة للمقاولات  
AL MAYMANAH CONTRACTING CO.



Head Office: Ring Road, Rawabi Dist., P.O. Box: 41113, 21521 Jeddah  
Riyadh Office: Al Narjis Trading Center, Abi Bakr As Siddiq Rd, An Narjis, Riyadh  
Kingdom of Saudi Arabia  
Tel: +966 12 621 3997 / 621 3667/ 621 7465 - Fax: +966 12 621 3017  
www.maymanah.com.sa info@maymanah.com.sa  
CR 4030143530 VAT 301261667100003

## AL MAYMANAH

Since 1990 Al Maymanah has serviced the municipal, industrial, residential & commercial sectors with various equipment and systems in water & wastewater treatment and water heating technologies.

Success through the years has always been credited to over 150 experienced and talented team of engineers, electro-mechanical technicians and skilled labors, who have worked in hundreds of installations. Additionally, Al Maymanah success hinges on its capability to serve its customers with a full range of technologies tailored to meet their specific requirements.

To date, Al Maymanah has completed hundred projects in the Kingdom of Saudi Arabia. Many of these are large turnkey contracts for the government sectors as well as for various industries and private enterprises. Current project executions include major contracts with big local end-users and international contractors/consultants.

Our knowledge of what's best for each application results in exceptional attention in detail that in turn leads to greater efficiency, higher performance, easier installation, longer service life and reduced maintenance. Our unique partnership with leading international manufacturers provides you equipment's that are reliable, cost-effective, and meeting your specific requirements.

Our service teams and workshops are highly skilled to carry out a wide range of after-sales technical services, including on-site alignments, troubleshooting, overhauling and repair services.

### Our range of products:

- Reverse Osmosis Systems for brackish water and seawater
- Sewage Treatment Systems
- Industrial Water Treatment Systems
- Water Reuse Systems
- Activated Carbon, Sand and Mixed Bed Filters
- Demineralizers, Softeners, Degassifiers
- Water Storage Tanks, Chemical Injection Systems, Dosing Pumps, Water and Sewage Pumps, Constant Pressure Pumping Systems
- Packaged and Containerized Custom-Built Plants
- Hot water, steam and solar systems - ECOTHERM (Austria) & American Water Heaters (USA)
- GRP Panel Type Water Tanks - HITANK
- Permanent and temporary high-quality elevators, construction hoists (ALIMAK)
- Access Solutions (Skyjack Scissor Lifts)

### Vendor Accreditations

Al Maymanah is registered / accredited as vendor with the following major clients:

- |                         |                         |
|-------------------------|-------------------------|
| ➤ Saudi Aramco          | : Vendor No. 10056963   |
| ➤ SABIC                 | : Vendor No. 0000505896 |
| ➤ SWCC                  | : Vendor No. 3690       |
| ➤ NWC                   | : Vendor No. 21984      |
| ➤ Saudi Electricity Co. | : Vendor No. 5002118    |

## 1.2 PRODUCTS

### 1- Design & Build (Water & Wastewater Treatment Solutions)



#### Water & Wastewater Treatment Solutions

Complete range of  
services required to  
design, build, upgrade  
and operate of water &  
wastewater treatment  
systems



Reverse Osmosis  
Brackish & Sea Water Desalination



Sewage Treatment Plant





**Pressure Media Filtration System**



**Gray Water Treatment**



**Ultra Pure Water & Demin Plant**



**Containerized treatment systems**



**Ultra Filtration**



**Odor Control Unit**





## 2- Packaged Systems (Water & Wastewater Treatment Solutions)



**Water Disinfection**  
(Gas chlorination / Chlorine Dioxide /  
Chemical Disinfection)



**Pumps & Pumping Systems**



**Valves, Penstocks, Sluice Gates, Stop  
Logs**



**GRP Panel/Sectional Type Storage  
Tanks**



**Chemical Preparation & Feed Systems**



**Smart Flow Meters (Isoil from Italy)**



### 3- Services (Water & Wastewater Treatment Solutions)



Operation & Maintenance



Disinfection for Water & Chilled Water Network

## Economical and Environmentally Beneficial Wastewater Treatment System The compact bio-disc system (RBC type)



### ARE YOU LOOKING FOR A SEWAGE TREATMENT PLANT WITH HIGH CLEANING PERFORMANCE?

Our employees have over 30 years of experience with sewage treatment plants using a wide variety of cleaning processes. We would be happy to optimize an existing system or create an individual offer tailored to your needs.

We offer you the delivery of complete systems with ready-to-use handover. We have a well-developed service network at home and abroad.

We also take on pre-planning, planning, assembly and maintenance. We have our own waste water laboratory in order to be able to present you with real-time results. We would also be happy to advise you on financing.

Our sewage treatment plants are demand-oriented and can be selected in any size from 6 to 30,000 inhabitants. The individual components can be assembled modularly according to your needs.

### HOW DO OUR BIODISC SYSTEMS WORK?

#### WASTEWATER TREATMENT TAKES PLACE IN THREE STAGES

| mechanical level  | biological level   | After clarification  |
|---|--|--|
| <ul style="list-style-type: none"> <li>• Multi-chamber pit, primary clarifier or self-cleaning sieve</li> <li>• Mechanical separation of the waste water from coarse impurities</li> <li>• Flow distributor for hydraulic equalization of the load in the biological stage</li> </ul> | <ul style="list-style-type: none"> <li>• Fully biological cleaning using biotowers as growth carrier for the biological lawn (microorganisms)</li> <li>• nitrification</li> <li>• denitrification</li> </ul> | <ul style="list-style-type: none"> <li>• Rotary filter with 40µm mesh size</li> <li>• Lamella separators for separating sludge from the cleaned water</li> <li>• Fully automatic sludge removal</li> </ul> |

### Advantages of the system:

- Fully automatic operation
- Energy-saving process
- Optimum cost-benefit ratio
- High system stability, even with extremely changing inflows
- Consistent cleaning performance through a closed system
- Low noise and odorless
- Fast assembly, easy maintenance
- Stationary and mobile
- Modular system for need-based expansion in stages
- little need for space
- Retrofitting of existing systems by integrating components



| High cleaning performance   | Minimal running costs   | Possible locations   | Plants can be used in a variety of ways   |
|---|---|--|---|
| <ul style="list-style-type: none"><li>• The cleaning performance significantly exceeds the required values (according to the framework deviation. VwV of 08/27/1991)</li><li>• 95-99% cleaning performance at BOD5, COD can be achieved</li><li>• Further wastewater treatment such as phosphate precipitation, sand filters or self-cleaning lamella filter disinfection</li></ul> | <ul style="list-style-type: none"><li>• Minimal energy costs</li><li>• Low maintenance effort due to few wearing parts</li><li>• Good accessibility</li><li>• Low personnel costs due to minimal monitoring effort with fully automatic operation</li></ul> | <ul style="list-style-type: none"><li>• Installable close to home or location</li><li>• In garages or containers (also mobile usable)</li><li>• Individual buildings</li><li>• part-earth-embedded</li><li>• Harmoniously adapt to the landscape</li></ul> | <ul style="list-style-type: none"><li>• Individual houses, groups of houses or communities</li><li>• campsites or mountain huts</li><li>• restaurants and hotels</li><li>• Construction sites (mobile)</li><li>• commercial areas and industrial plants</li></ul> |





## BIOCLEAN Lamella Separator for Reduction of Water Consumption

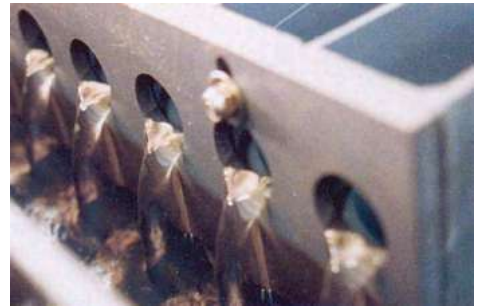
Rising costs for fresh water increasingly burden the budgets of businesses and industries. It should be evaluated how water consumption could be reduced resp. how polluted water could be purified during processing and fed back directly.

A significant potential for water saving can be found in such companies where water is just used for transport, cooling and cleaning purposes. During the process, the water takes on impurities and must be constantly replaced. The high consumption of fresh water could be avoided with an intermediate clarification and removal of all matters being heavier than water by sedimentation and separation. The purified water can be led back into the circuit. Just a minimum quantity of water has to be replaced.



### Function of the BIOCLEAN Lamella Separator

The waste water flows into the BIOCLEAN Lamella Separator on the upper level and descends to the bottom to rise slowly in a laminar flow between the separator plates. The heavy than water particulate settles on the angled plates and slide down into the collector pit, from where it came, can be periodically pumped off, rises between the separator plates and the sedimentation process eliminates the heavy particulate. The clean water is collected at the top, floating debris is screen off, and the clarified water is returned to the process for recycling.



If required a flocculant aid can be added to increase settlement of the particulate.

### Advantages of a BIOCLEAN Lamella Separator

1. Minimum space requirement
2. No energy costs
3. No moving parts to wear out
4. Unlimited expansion
5. Produced under high factory quality standards



# GRP Panel Type Water Storage Tanks; HI-TANK – KOREA

Storing water is of vital importance, as bad storage will contaminate even the best water supplies. Al Maymanah offers an excellent storage medium through its GRP Panel type Water Tanks from “HI-TANK – KOREA” widely used for applications such as residential complexes, buildings, hospitals, industries and any other water storage application.

## GRP Water Tank Hi TANK

### ■ EASY & FAST CONSTRUCTION

The standardized panels and accessories improve the economical and operational efficiency in the transportation and construction.

### ■ RELIABLE QUALITY IN STRENGTH & DURABILITY

A structure analysis has been carried out based on the F.E.M(Finite Element Method) to pursue an optimal design and thus secure reliability for the strength of the reinforcement system and panels

### ■ BEST HYGIENIC PROPERTIES

The WRAS certified GRP panels of which surface is uniformly smooth without getting any sediment, and prevent the growth of any algae and fungi by blocking light transmission.

### ■ WATER TIGHTNESS

The joints of each panel are perfectly sealed with foam tape which has good weathering resistance and restorative ability.

### ■ COMPLETE DRAINAGE

The dome shaped bottom panels with a concave drain panel facilitate complete and fast drainage.

### ■ OUTSTANDING THERMAL EFFECT

The heat insulation panel with 3-layer(SMC panel + PU foam + ASA weatherproof cover) structure protects dew condensation and minimizes temperature variation of the stored water.

### ■ FREE CAPACITY DESIGN

Hi TANK fits into any limited space as its structure utilizes horizontal and vertical spaces at the maximum through the use of diverse sizes of panels.

## GRP Water Tank

**HITANK** is made of SMC Panel which is produced by hot-press molding method.

It gives you full satisfaction in terms of hygienic properties, easy & speedy construction, water tightness and durability.





# World Leader in Triplex Reciprocating High-Pressure Pumps

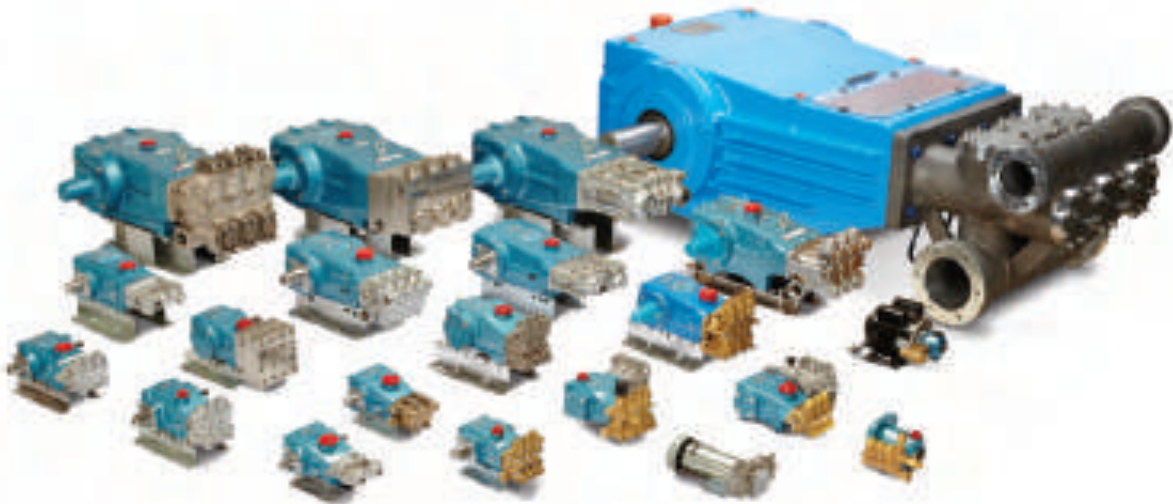
Cat Pumps designs and builds products to the highest quality level for one major reason: our customers depend on our products to keep their equipment running. Every design detail is optimized for long product life and reliable performance.

Cat Pumps embraces a zero defect manufacturing philosophy. Stringent process controls result in highly repeatable processes, yielding the highest level of product reliability. Cat Pumps commitment to quality is legendary within the industry, earning the trust from customers worldwide. When it needs to run, make it Cat Pumps.

## Product Performance Range

A wide range of pump options are available, including a variety of products that meet various industry certifications and directives.

- Flow: 0.13 to 240 gpm (0.49 to 908 lpm)
- Pressure: 100 to 10,000 psi (6.9 to 689 bar)
- RPM: 100 to 3450
- Liquid Temperature: -10° to 240°F (-23° to 115°C)
- Manifold Materials: Brass, Nickel Aluminum Bronze, 304 and 316 Stainless Steel, Duplex Stainless Steel
- Drives: Electric, Engine, Hydraulic, Pneumatic

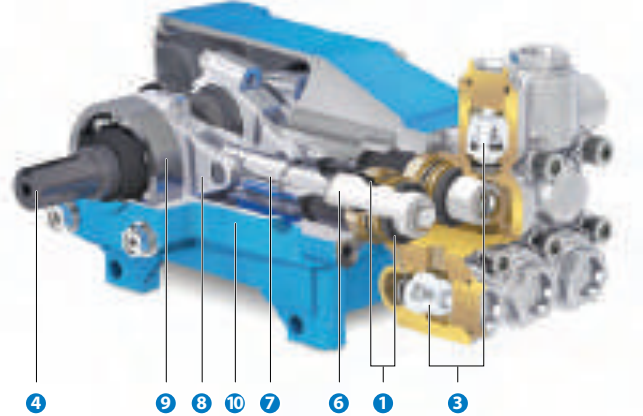




## Pump Selection

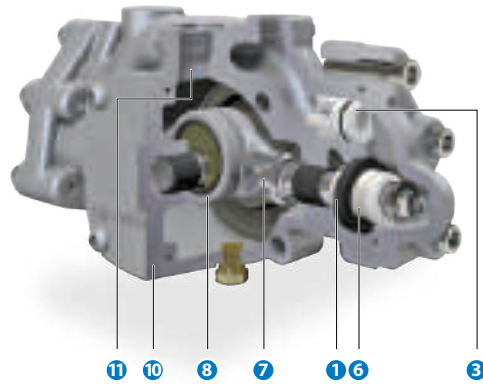
### Plunger Pumps (0.13 – 240 gpm, 100 – 10,000 psi)

Plunger pumps utilize spring-loaded closed and hydraulically opened inlet and discharge valves to direct flow through the pump manifold. At the beginning of the stroke, the plunger displaces the liquid in the manifold chamber, forcing the discharge valve open. When the plunger reaches the end of the stroke, the discharge valve closes. As the plunger rod begins its backward stroke, the inlet valve opens to allow more liquid into the manifold chamber, thereby keeping a smooth forward flow of liquid.



### XP Series Pumps (0.5 – 2 gpm, 100 – 1,000 psi)

In XP series pumps, fluid enters the inlet port and flows through the drive-end, lubricating the connecting rods and plunger rods as it passes to the inlet valves. Both inlet and discharge valves are spring-loaded closed and hydraulically opened, similar to plunger pumps, however, they utilize a flow-through ceramic plunger design. The continuous forward flow characteristics in conjunction with the packing design of plunger pumps result in improved suction capabilities as well as extended seal life.



## Features

- 1 Specially formulated, Cat Pumps exclusive high pressure and low pressure seals offer unmatched performance and seal life.
- 2 100% wet cup/seal design adds to service life by allowing pumped fluids to cool and lubricate the elastomers on both sides.
- 3 Stainless steel valves, seats, and springs provide corrosion-resistance, positive seating and long life.
- 4 Chrome-moly crankshaft provides unmatched strength and surface hardness for long life.
- 5 The patented stepped piston rod with hard chrome-plated sleeve provides a durable wear surface and easy wet end servicing.
- 6 Precision-polished, solid ceramic plungers provide maximum resistance to corrosion and abrasion, extending seal life.

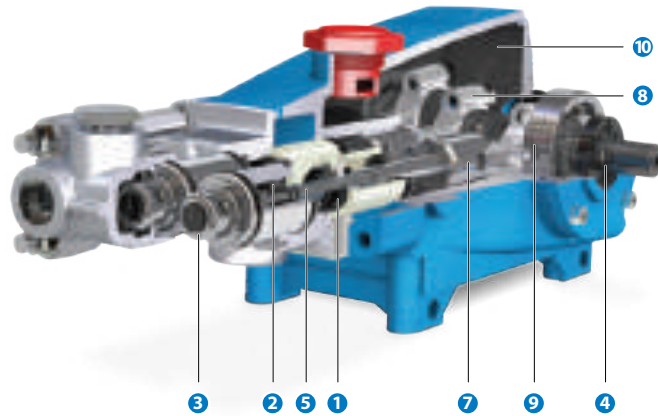






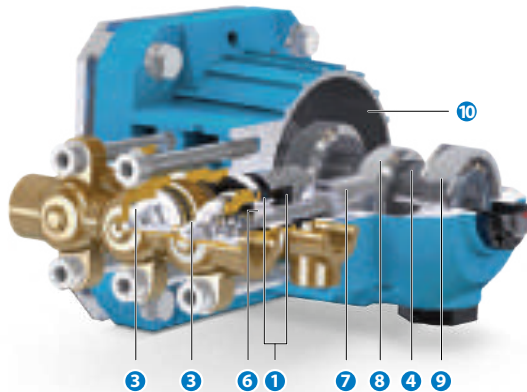
## Piston Pumps (3.0 – 60 gpm, 100 – 1,500 psi)

The design of the piston pump is for the fluid to move continually in one, smooth forward direction. This design allows greater suction capabilities and reduces the risk of cavitation provided the pump is properly primed. At the beginning of the stroke, the mechanically actuated inlet valve (and piston) will close. As the piston rod moves forward, the liquid is forced out through the discharge valves. Simultaneously, the liquid enters the pump inlet and flows in behind the inlet valve. As the piston rod begins the backward stroke, the inlet valve mechanically opens, permitting the liquid to continue its flow forward through the piston into the discharge chamber.



## SF Series Pumps (0.5 – 5.0 gpm, 100 – 3,500 psi)

In SF series pumps, both the inlet and discharge valves are spring-loaded closed and hydraulically opened, similar to plunger pumps, however, they have a flow-through ceramic plunger design. The continuous forward flow characteristic of piston pumps is utilized in conjunction with the packing design of the plunger pumps. These features give SF pumps both strong suction capabilities and higher pressure performances.



- 7 The high strength stainless steel plunger rods have a 360° supported crosshead providing uncompromising plunger rod alignment.
- 8 Matched oversized connecting rods are made of high strength material with exceptional bearing quality.
- 9 Oversized ball bearings or tapered roller bearings provide extended bearing life.
- 10 High Strength, light weight die cast aluminum crankcase with splash oil design allows operation at speeds as low as 100 RPM.
- 11 Patented greaseless design uses water from inlet as lubrication, eliminating the maintenance and mess of grease or oil.



## 4- Hot Water Solutions (Turnkey Projects)



- Only one supplier
- Design of all components of the system is perfectly coordinates
- Saving time and money



**ECOTHERM** (Founded in 1880) Austria is the leading brand for individual Hot Water, Steam and Solar Systems for hotels and hospitals, as well as commercial & industrial applications. With distributors in more than 25 countries, thousands of references and premium quality and support, ECOTHERM is a preferred partner. ECOTHERM develops, designs, produces and supplies stainless steel components, like: high capacity water heaters, shell&tube heat exchangers, flat spiral heat exchangers, pressure vessels, boilers, insulations, as well as packaged, energy & space saving hot water, steam and solar turnkey solutions.



**American Water Heaters** is a leading manufacturer of high-quality water heater products with manufacturing, research and development and corporate offices located in Johnson City, TN. American offers a comprehensive line of residential and commercial water heaters.



## **Ecotherm is the leading brand for turnkey hot water, steam and solar systems for hotels, hospitals and the industry.**

Ecotherm amazes with „Individual Heat Transfer Solutions“ for hot water and steam generation.

### **Individuality**

Ecotherm develops extensive turnkey systems as well as separate components. Each plant is specifically aligned to the customer's individual requirements. The base is our own production facility in Austria and a wide product portfolio, which enables the combination of all relevant energy sources such as oil, gas, electricity and renewable energies.

### **Premium quality**

All products are made of high-class duplex stainless steel and guarantee a long-life cycle and perfect hygiene. Ecotherm is certified to ISO 9001 : 2015 with all European standards. Our own test bench assures highest quality and reliability.

### **Innovation**

We are always open to new ideas, we constantly investigate new technologies and we develop path-breaking and future-oriented products. Many patents are the result of the in-house innovation management. With an elaborated 3D visualization, Ecotherm systems can be guided and controlled at all times.

### **Premium service**

Clients benefit from our extensive service at consulting, planning, engineering, supervision and training. Ecotherm regularly improves the know-how of its partners and clients with selective trainings.

### **Efficiency**

The Ecotherm Group, managed by the owner, has slim decision-making structures. Consequent research and development work permanently optimize the energy efficiency and the durability of the products. Ecotherm turnkey solutions offer an optimal cost-benefit ratio.

### **Experience**

With over thousand installations in the last decade in Europe, the Middle East, Asia, North Africa and Central America, Ecotherm has become the leading brand in technology and innovation for individual hot water, steam and solar solutions. The Ecotherm team is continuously refreshing their know-how with exceptional trainings and seminars that the Ecotherm Academy provides.

### **Reliability**

Ecotherm systems are monitored all around the clock and can be serviced at low cost, quickly and efficiently with an advanced control panel. Our self-designed plants have low maintenance requirements and are totally dependable.

### **Sustainability**

Ecotherm products help our customers save energy and money. We save valuable resources by using renewable energies. Ecotherm high-performance plants have minimal space requirements and provide maximum energy savings. When planning new products, Ecotherm engineers take all the qualitative and economic principles into account in accordance with the ecological principles.

### **Partnership**

We live in a partnership with all our customers, suppliers and employees. This relationship is characterized by honesty, commitment, openness, trust and reliability. The object is a joint long-term success.

### **Internationality**

The international alignment of Ecotherm with branches in Dubai, Kuwait, Mexico, Hungary and India and further partners in more than 25 countries is the base for our flexible and efficient project implementation.



## Product Overview



Turnkey Hot Water, Steam and Solar Systems



High Capacity Water Heaters  
with Shell & Tube Heat Exchangers  
up to 2,000 kW & 20,000 liters



Hot Water & Combination Tanks  
with patented Flat Heating Coils  
up to 1,000 kW & 20,000 liters



Electric Water Heaters  
up to 2,000 kW & 20,000 liters



Shell & Tube Heat Exchanger  
with turbulator rods  
up to 2,000 kW



Direct Fired Water Heaters  
up to 150 kW & 5,000 liters



Solar Thermal & Solar Steam Solutions  
for solar heating, solar cooling & process  
heating for villas, hotels & industry



Fibre-Fleece Insulation  
with patented closure strips  
100 liters to 20,000 liters

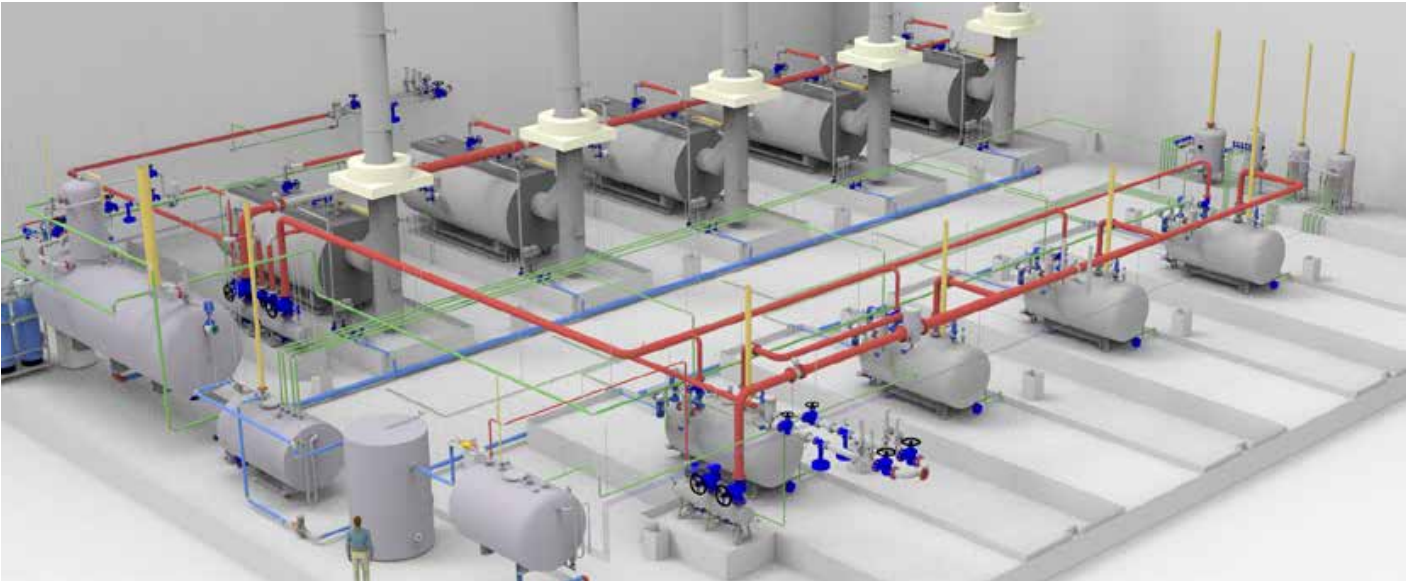


Triple Pass Boilers, Steam Boilers  
for gas or oil operation  
up to 21 MW & 20,000 kg/h



Clean Steam Generators  
steam/steam or electric  
up to 5,000 kg/h





## Turnkey Hot Water, Steam and Solar Systems

As the leading brand for turnkey hot water, steam and solar systems, Ecotherm provides solutions for hotels, hospitals and the industry in accordance with your individual requirements.

ECOTHERM turnkey system benefits:

- all components come from one supplier, therefore, only one guarantee partner
- space and energy savings, hygiene, low maintenance costs, long life-time of the plants
- pre-assembled and pre-wired systems
- quality management according to ISO 9001 : 2015
- professional project management for project handling in time
- perfectly coordinated design of the components for safety in the daily operation
- individual 3D-models of the project as well as 3D-animations and presentation videos
- professional engineering with design, dimensioning, specification, CAD design
- thermal and static calculation according to all relevant standards
- self-developed Ecotherm design software for heat exchanger and hot water systems
- Ecotherm's production facility with complete pre-assembly of the customized systems
- high quality stainless steel components
- eco-friendly pickling plant
- most modern remote control via touchscreen-panel with 3D-visualization
- supervision, commissioning, documentation and trainings

Your additional plus after implementing:

- possibility of telemaintenance and visualization for monitoring, checking the functional efficiency and cost effectiveness

## Our Turnkey Solutions:



**Hot Water**



**Steam**



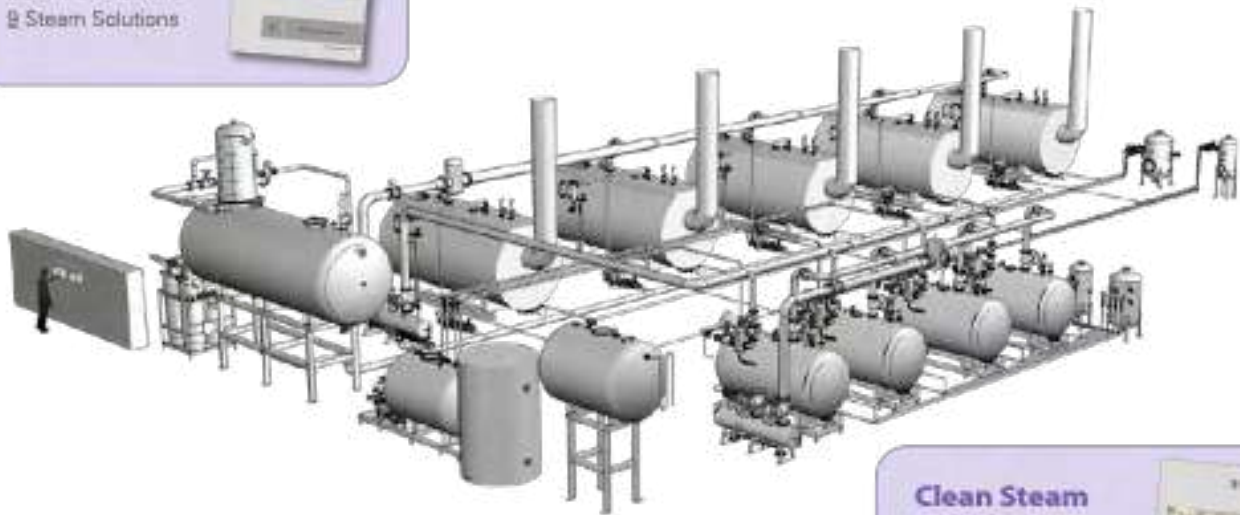
**Solar**



**Electric**

### Plant Steam Solutions

Details in brochure  
9 Steam Solutions



### Clean Steam Solutions

Details in brochure  
9 Steam Solutions



### Solar Thermal Solutions

Details in brochure  
12 Solar Thermal Solutions



### Solar Steam

Details in brochure  
13 Solar Steam



## 1.3 TECHNICAL SERVICES & SUPPORTS

### 5.3.1 AFTER - SALES SERVICE

Al Maymanah has always taken care of its customers' needs aimed at giving a highly qualified technical assistance with a wide range of activities, services and products.

**Its unique range of skills, expertise and know-how enable it to provide:**

- 24/7 service and support
- Local support staff
- Supplies of spare parts and consumables
- Analysis services

### 5.3.2 PROCESS VALIDATION

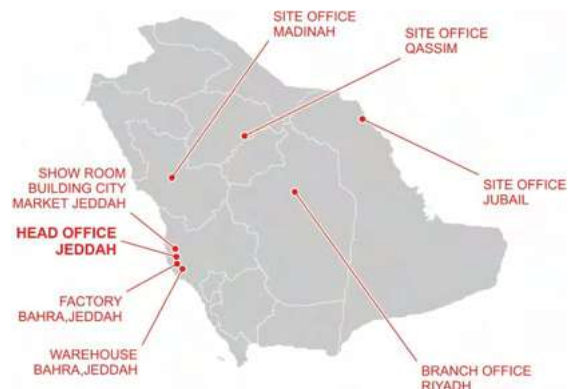
AL MAYMANAH ensures to collect all the necessary data to formulate consultancy recommendations and feasibility opinions that allow the customer to work properly with its equipment.

### 5.3.3 TECHNICAL ASSISTANCE & TRAINING

Technical training is one of the cornerstones of AL MAYMANAH Success, It's an essential issue to ensure the proper and long lasting operation of our systems. AL MAYMANAH offers technical seminars & training programs to meet the site's requirements and assist in the development of client operators and engineers to the highest level in industrial technologies.



Al Maymanah Head Office  
Rawabi District - Jeddah



# 1.4 VENDOR ACCREDITATIONS

Al Maymanah is registered / accredited as vendor with the following major clients:





## 1.5 Our Partners – Water & Wastewater Solutions

### Water & Wastewater Treatment Solutions

Complete range of  
services required to  
design, build, upgrade  
and operate of water &  
wastewater treatment  
systems



## 1.6 Our Partners – Hot Water Solutions



### HOT WATER & STEAM SYSTEMS



ECOTHERM & American  
Water Heater - Complete  
range for small, medium  
& high capacity water  
heaters, heat exchangers,  
clean steam generators  
and solar systems for  
hotels, hospitals and the  
industry



## 1.7 Selected Clients



## 1.8 Selected Consultants





## 1.9 QUALITY POLICY

We, at AL MAYMANAH, are committed to provide quality and excellent Water and Wastewater Treatment Systems and Industrial Skids to all of our customers.

We take the responsibility to communicate, deploy, and ensure implementation and continually improve our **Quality Management System** as compliant to ISO 9001:2015 standards.

We shall;

- Establish, improve and realize the policies and measurable objectives and plans;
- Execute activities which comply to client requirements, applicable statutory and regulatory requirements and related international standards;
- Define responsibilities, authorities and communication process within the organization and all of its business undertakings;
- Allocate and manage resources appropriately including human resources, infrastructure and safe working environment;
- Ascertain that all staff are trained, competent and aware of their roles in providing good client service;
- Measure, analyse and improve the Management System through Management Review Meetings, Internal Audit, Customer Satisfaction Assessment, Control of Nonconformances, Performance Evaluation and Data Analyses.
- Maintain and keep documented information of Quality Management System in accordance with International Standards, regulations and directives;
- Continuously improving our quality management system through the timely implementation of process improvement activities.

Khalil Abudakka  
Deputy General Manager



# CERTIFICATE OF REGISTRATION



PEERS QUALITY  
ASSURANCE LTD

This is to certify that

**AL MAYMANAH FOR CONTRACTING CO. LTD**

Of

**JED-MAK RING ROAD AFTER KING ABDULAZIZUNIVER-BRIDGE/RAWABI, P.O.BOX 41113,  
JEDDAH-21521, KINGDOM OF SAUDI ARABIA**

Operates a Quality Management System which has been assessed as conforming to:

**ISO 9001:2015**

**For the Scope of activities:**

**Design, Supply, Installation, Testing & Commissioning for Water Treatment, Wastewater Treatment and Heating Systems. Provision of Design for Access Solutions and Unique Building Designs Especially for Mast Climbing Work Platforms for their Safe, Economical, Ergonomic and Free-Standing Capabilities**

Certificate Number: **UAE/5/6372713658**  
Date of Initial Assessment: **03/01/2022**  
Date of Registration: **05/01/2022**  
Date Re-Issued: **N/A**  
Date of Expiry: **05/01/2023**

Certificate approved by:

Chris McMillan - Managing Director  
**Peers Quality Assurance Limited**

This Certificate remains the property of  
**Peers Quality Assurance Limited**

Suite 2, Austin Court  
Walsall Road  
Four Oaks  
Sutton Coldfield  
B74 4QY England  
[www.pqal.co.uk](http://www.pqal.co.uk)

For verification of this certificate, please contact the PQAL UK Office



## 1.10 HEALTH, SAFETY AND ENVIRONMENTAL POLICY

We, at AL MAYMANAH, is committed of strict adherence to all legal, social and moral requirements pertaining to the well-being and safety of its workers, environment and all those directly or in directly related to its operational and business activities.

We understand the importance of providing all out support for a safe work area for its employees, customers and visitors. Consistent with this policy, we will establish, document, implement, maintain and continually improve our Environmental, Health & Safety (EHS) management systems that are consistent with the requirements of International Standards **ISO14001:2015 Environmental Management System (EMS)** and **OHSAS 18001:2007 Occupational Health and Safety Assessment Series (OHSAS)**.

We shall;

- Ensure compliance with all relevant legislation and regulations; pertaining to EHS;
- Identify, assess, manage and monitor the potential environmental aspects in order to control and minimize significant environmental impacts;
- Prevent pollution and continually improve environmental performance by controlling, eliminating or reducing harmful releases, use of hazardous and toxic materials and wastes discharges to the environment;
- Assess and control all risk from the occupational health & safety hazards encountered from our work activities;
- Provide a safe working environment and adequate welfare facilities and arrangements;
- Prevent and investigate accidents, incidents and cases of work-related ill-health;
- Provide the necessary resources to carry out this policy to full effect;
- Provide information, instruction, supervision & training to our personnel to increase their EHS awareness;
- Set and review EHS objectives and targets;
- Communicate this policy to personnel, suppliers, contractors, interested parties and to the public upon request;
- Review and revise policy on a continual basis in the light of legislative or organizational changes, at least annually.

Khalil Abudakka

Deputy General Manager



## 1.11 MISSION, VISION & VALUES



### Mission

We are designing and implementing innovative solutions to take on the four major challenges of the resource revolution: developing access to the resources, protecting these resources, optimizing their use and producing new ones.



### Vision

To be the premier environment solutions provider in the Middle East, adding value to customers & society by leading technology and process innovation.



### Values

- **Excellence:** Excellence in our business and operations, we set and achieve ambitious goals by constantly raising the bar of our performance.; excellence in reputation.
- **Quality:** In all aspects of our solutions, services and processes.
- **Safety:** safety first! We are committed to protecting the well-being of our employees, partners, plants and the communities in which we operate.
- **Innovation:** Lead and define industry practices and benchmarks; be a pioneer.
- **Respect:** We treat our employees and partners with respect and professionalism, fostering a working environment where people can contribute, innovate and excel.
- **Honest & Transparent:** Honest and transparent in all transactions – internal and external.





## 2.0 List of Projects completed





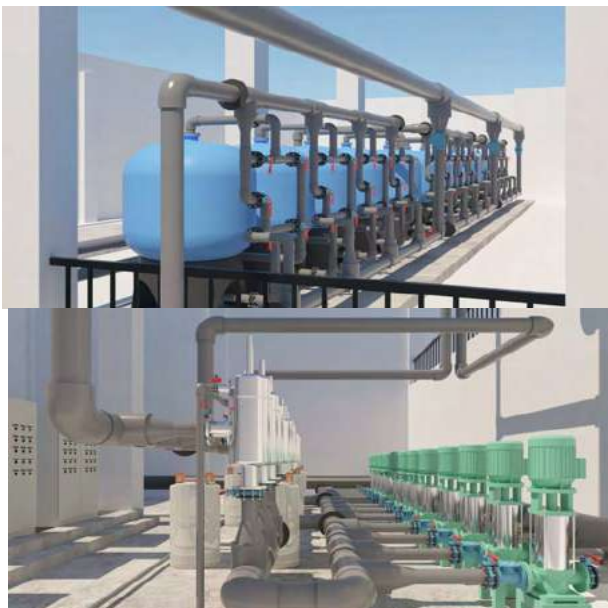
## KING ABDULAZIZ INTERNATIONAL AIRPORT

- Client: KAIA
- Type of contract: Design, Build & Operate
- Year of delivery: 2019
- Technology: 8 X 7500 (60,000 m<sup>3</sup>/day) TSE Polishing RO Plant
- Location: Jeddah, Saudi Arabia



## Treatment Plant for Drain Water from ZamZam Drinking fountain at HARAM AND PIAZZA Area

- Client: SBG
- Type of contract: Design & Build
- Year of delivery: 2021
- Technology: (1325 m<sup>3</sup>/day) DAF + UF + RO
- Location: Makkah, Saudi Arabia



## ROZA FARM Temporary TSE Treatment Plant

- Client: CPPA
- Type of contract: Design & Build
- Year of delivery: 2021
- Technology: (18,000 m<sup>3</sup>/day)
- Location: Riyadh, Saudi Arabia





### VIA RIYADH Marriott St. Regis

- Client: Sela
- Type of contract: Design & Build
- Year of delivery: 2021
- Technology: Water Filtration System, Water Softener Systems, Disinfection 2,500 m3/day
- Location: Riyadh, Saudi Arabia



### KING ABDULLAH FOUNDATION PROJECT – SOFITEL HOTEL

- Client: King Abdullah Foundation
- Type of contract: Design & Build
- Year of delivery: 2019
- Technology: 653 m3/day TSE Polishing Plant, Total of 2,000 m3/day Filtration Systems. 2,400 m3/day Softener Systems
- Location: Riyadh, Saudi Arabia



### KING SAUD BIN ABDUL AZIZ UNIVERSITY FOR HEALTH SCIENCES

- Client: National Guard
- Type of contract: Design, Build & Operate
- Year of delivery: 2009
- Technology: RO 2 x 2,600 m3 / day STP 12,000 m3/day, 6,000 m3/day and 3,000 m3/day
- Location: Jeddah, Riyadh & Madina, Saudi Arabia







### Umm Melh Airport Project – Kharkhir

- Client: GACA
- Type of contract: Design & Build
- Year of delivery: 2015
- Technology: 1000 m<sup>3</sup>/day BWRO Plant
- Location: Umm Melh, Saudi Arabia



### King Faisal Air Academy Project in Majma'a KFAA

- Client: BSS JV
- Type of contract: Design & Build
- Year of delivery: 2020
- Technology: 3 Trains X 320 M<sup>3</sup>/Day Mobile STP.  
1,000 m<sup>3</sup>.day Containerized BWRO
- Location: Majmaa, Saudi Arabia



### King Faisal Specialist Hospital

- Client: KFSH
- Type of contract: Design & Build
- Year of delivery: 2016
- Technology: 1250 m<sup>3</sup>/day STP, Water Treatment Station for Labs
- Location: Jeddah, Saudi Arabia







### Ministry of Interior – Correctional Facilities

Jeddah, Dammam, Taif & Riyadh

- Client: MOI
- Type of contract: Design & Build
- Year of delivery: 2013
- Technology: Total 4,400 m<sup>3</sup>/day Greywater & 8,000 m<sup>3</sup>/day STP
- Location: Jeddah, Dammam, Taif & Riyadh, Saudi Arabia



### King Abdullah Financial District Zone 2,3,4 and 5

- Client: KAFD
- Type of contract: Supply & Installation
- Year of delivery: 2015
- Technology: 61 Nos. GRP Water Tanks (Capacity 4,205 m<sup>3</sup>), 3x Grey Water Systems, RO Plant and 40 Nos UV sterilizers
- Location: Riyadh, Saudi Arabia



### MOI Several Sites Operation & Maintenance

- Client: MOI
- Type of contract: O&M
- Year: 2011 - Current
- Technology: 1,500 m<sup>3</sup>/d RO & 1,500 m<sup>3</sup>/d STP
- Location: Jeddah & Qassim, Saudi Arabia





### Makkah Clock Tower

- Client: Al Burj Facility Management
- Type of contract: O&M
- Year: 2009 - Current
- Technology: STP 2000 m<sup>3</sup>/day
- Location: Makkah, Saudi Arabia



### National Guard General Hospital

- Client: National Guard General Hospital
- Type of contract: O&M
- Year: 2010 - Current
- Technology: STP 600 m<sup>3</sup>/day
- Location: Madina, Saudi Arabia



شركة الميمنة للمقاولات  
AL MAYMANAH CONTRACTING CO.



Head Office: Ring Road, Rawabi Dist., P.O. Box: 41113, 21521 Jeddah  
Riyadh Office: Al Narjis Trading Center, Abi Bakr As Siddiq Rd, An Narjis, Riyadh  
Kingdom of Saudi Arabia  
Tel: +966 12 621 3997 / 621 3667/ 621 7465 - Fax: +966 12 621 3017  
[www.maymanah.com.sa](http://www.maymanah.com.sa) [info@maymanah.com.sa](mailto:info@maymanah.com.sa)  
CR 4030143530 VAT 301261667100003

