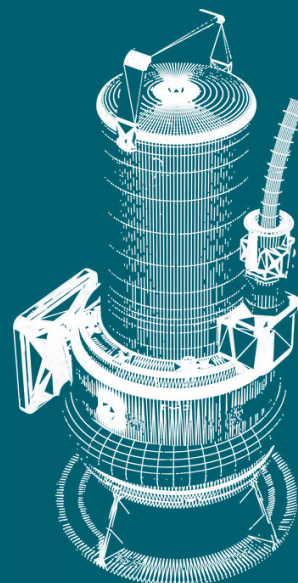
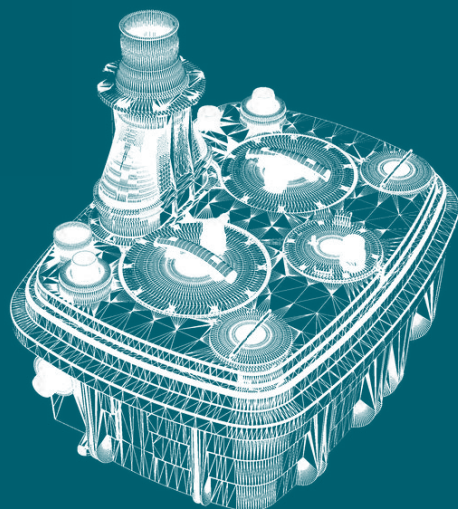
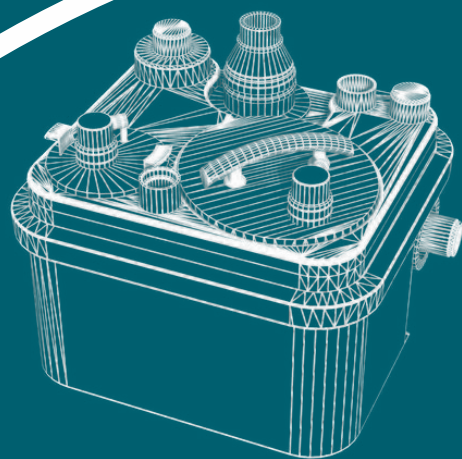




**Bring your  
Projects to  
Life**



MADE IN FRANCE



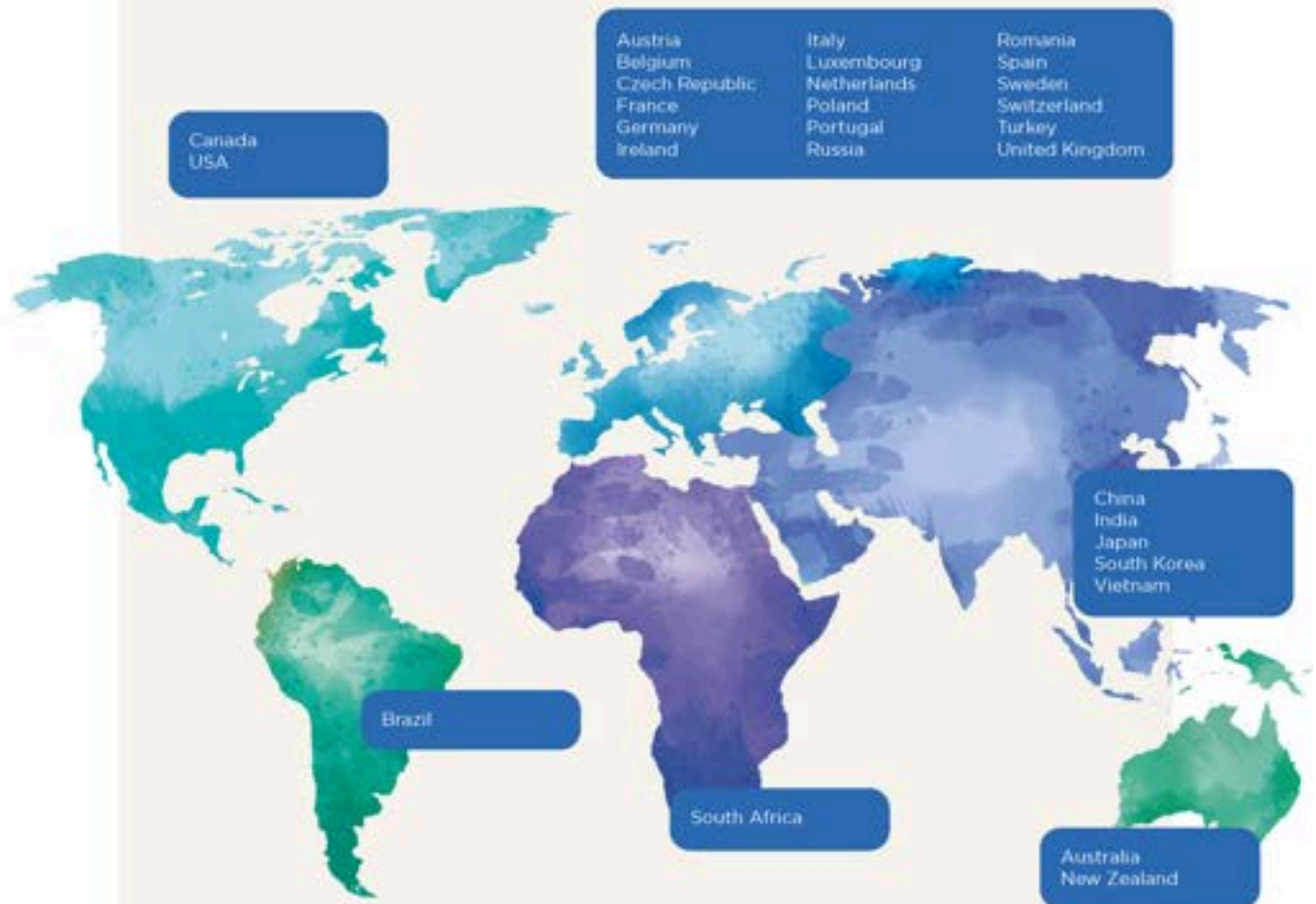
**Products Overview**



# SFA GROUP: THE WORLD LEADER FOR SANITARY EQUIPMENT

## AN INTERNATIONAL GROUP

Established in 29 countries on 5 continents, the Group continues its international deployment through alliances with selected and carefully trained professionals in the sector to carry the reputation of performance, quality and service of the international Group.



### WE ALSO EXPORT TO MANY COUNTRIES, E.G.

Albania, Algeria, Angola, Armenia, Azerbaijan, Bahrain, Benin, Bosnia & Herzegovina, Bulgaria, Cameroon, Cote d'Ivoire, Cyprus, Congo, Djibouti, Egypt, Eritrea, Estonia, Ethiopia, Finland, Georgia, Ghana, Greece, Guinea, Israel, Jordan, Kazakhstan, Kenya, Kuwait, Kyrgyzstan, Latvia, Malta, Mauritius, Moldova, Mongolia, Morocco, Mozambique, Nigeria, Oman, Qatar, Saudi Arabia, Senegal, Sudan, Tajikistan, Tanzania, Tunisia, Turkmenistan, Ukraine, United Arab Emirates, Uzbekistan, Zambia, etc.



# THE EXCELLENCE OF MADE IN EUROPE

Since 1958, the famous Sanibroyeur has been planted in the middle of this village in the Oise region on a site of more than 8 hectares, and enjoys a high level of brand awareness. Every day, around 300 employees work hard to bring the slogan «SFA and it's easy» to life. Over the years, after major investments, the Brégy site has grown from a simple assembly base to a fully-fledged, almost autonomous production centre.

## DESIGN OFFICE & TEST BENCH



SFA products are designed and developed in the on-site laboratory. Then, there is nothing like testing to ensure the proper functioning and longevity of the products.

## MOLDING INJECTION



All plastic and rubber components are produced in Brégy, utilizing 42 injection presses and 800 molds. Our production process is fully autonomous & automated, starting from the retrieval of plastic pellets from silos and continuing through to the production of finished components.

## MANUFACTURE OF PUMPS AND LIFTING STATIONS



Zehnder Pumpen was one of the first companies to produce an innovative lifting station with a high-quality plastic tank. The on-site manufacturing of the tanks allows us to specifically respond to each request. The various controls are also carried out in the factory.

## WINDING & MANUFACTURING OF MOTORS



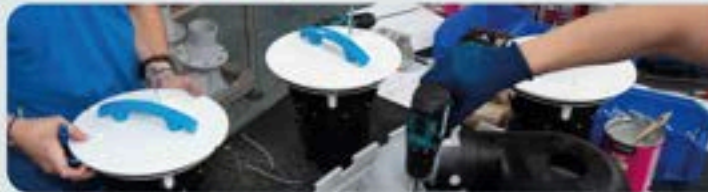
SFA has integrated winding manufacturing and motor assembly since 1960. Fully robotized, a digital camera controls part of the elements to ensure maximum quality throughout the production process.

## ELECTRONIC BOARDS



In the interest of superior quality & flexibility, SFA has recently integrated the production of its electronic boards at the Brégy site. These boards are then assembled & tested by our specialists.

## ASSEMBLY OF COMPONENTS



An ingenious combination of robots and humans, the parts are assembled by hand by operators for meticulous work or by robots for the most difficult parts to transport or fix.

## LOGISTICS

Shipments are managed from Brégy. Our infrastructure allows us to ship SFA products anywhere in the world.





# CSR COMMITMENT

Learn more about  
our corporate social  
responsibility.



## Our responsibility

Our Group is mobilised around our purpose **"To design and manufacture domestic and professional solutions wherever water flows and drains"**.

Driven by this inventive spirit, we design original solutions that are **low in water and energy consumption**, easy to install and long-lasting; proof that **our group has integrated CSR into the heart of its model well before its time.**



WE SUPPORT



Since 2021, the SFA Group has been a proud participant of the **United Nations Global Compact's initiative for corporate social responsibility** which encompass human rights, labour standards, environmental protection, and anti-corruption efforts.



## SOCIAL

**Ensure respect and dignity**

Ensure respect and dignity for all persons in contact with our brands: employees, stakeholders and users, in the conduct of our business and in the use of our products.

## ENVIRONMENT

Preserve water and reduce our carbon footprint via efficient, durable products and solutions.



## IMPACTFUL BUSINESS

**Maintain a keen and inventive spirit**

Utilize our inventiveness to disrupt the market, maintain a lively and inventive spirit, choose reliable and virtuous partners, and design solutions that disrupt the market and are accessible to the widest audience.

## COMPLIANCE WITH STANDARDS

SFA products are in compliance with :  
EU standards : EN 12050-1 ; EN 12050-2 ; EN 12050-3  
American & Canadian Standards:  
US: CSA Certified & IAPMO (UPC) listed - ASME A112.3.4,  
Canada : Macerating Standard CSA B45.9,  
TP TC 010/2011  
TP TC 020/2011  
TP EA3C 037/2016



## GUARANTEED FRENCH ORIGIN

Most SFA products are accredited by an independent organization, granting them this prestigious label, the sole certification for French product origin.





# OUR GRINDING TECHNOLOGIES

Due to the groups continuous research and development efforts, SFA macerators have remained at the forefront of technology since their invention. Noise level, accessibility and design are all key elements to meet the needs of our customers.

Our extensive range of macerator and pump solutions are made with a selection of different grinding or vortex systems suitable for every site situation.

## SINGLE BLADE Cutter

The single-blade cutter reduces the black waste into fine particles. The rotating steel blade cuts through waste materials and discharges the water and waste at the same time.



## MULTI CUTTER Disc

The multi-cutter disc uses a shredding action and acts as a turbine. This technology is available in the Sanicompact.



## PROX K2 Impeller

The prox K2 impeller is a more robust blade and has been designed to deal with the occasional obstruction such as a wet wipe, tampon, sanitary towel or condom.



## VORTEX KX V6 Impeller

SFA also has vortex technology. This technology is able to deal with particles of up to 50 mm, to meet the most demanding applications and creates a centrifugal action rather than a cutting blade.



## TWO-CHANNEL wheel

The two-channel wheel sucks out and discharges grey water and particles without grinding them and provides 50 mm clearance for maximum performance.





# MACERATOR PUMPS

## Saniflo

4 m  
100m

Number of inlet	1
External outlet diameter	100 mm
Discharge outlet diameter	22/32 mm
Max. incoming temperature	35 °C
Voltage - Frequency	220-240 V - 50-60HZ
Motor Power	400 W



## Sanitop

5 m  
100m

Number of inlet	2
External outlet diameter	40 / 100 mm
Discharge outlet diameter	22/28/32 mm
Max. incoming temperature	35 °C
Voltage - Frequency	220-240 V - 50-60HZ
Motor Power	400 W



## Sanipro XR

5 m  
100m

Number of inlet	4
External outlet diameter	40, 100 mm
Discharge outlet diameter	22/28/32 mm
Max. incoming temperature	35 °C
Voltage - Frequency	220-240 V - 50-60HZ
Motor Power	400 W



## Saniplus

5 m  
100m

Number of inlet	4
External outlet diameter	40, 100 mm
Discharge outlet diameter	22/28/32 mm
Max. incoming temperature	35 °C
Voltage - Frequency	220-240 V - 50-60HZ
Motor Power	400 W



## Sanipack

5 m  
100m

Number of inlet	4
External outlet diameter	40, 100 mm
Discharge outlet diameter	22/28/32 mm
Max. incoming temperature	35 °C
Voltage - Frequency	220-240 V - 50-60HZ
Motor Power	400 W



## Sanibest Pro

7 m  
110m

Number of inlet	4
External inlet diameter	40, 100 mm
Discharge outlet diameter	22/28/32 mm
Max. incoming temperature	35 °C
Voltage - Frequency	220-240 V - 50-60HZ
Motor Power	1100 W



## Sanigrind Pro

7 m  
100m

Number of inlet	4
External inlet diameter	40, 100 mm
Discharge outlet diameter	22/28/32 mm
Max. incoming temperature	35 °C
Voltage - Frequency	220-240 V - 50-60HZ
Motor Power	1100 W



## Saniaccess 1-2-3

5 m  
100m

Number of inlet	1	2	3
External inlet diameter	40, 100 mm		
Discharge outlet diameter	-	-	15 cm
Max. incoming temperature	35 °C		
Voltage - Frequency	220-240 V - 50-60HZ		
Motor Power	400 W		



## Saniwall Pro

5 m  
100m

Number of inlet	3
External inlet diameter	40, 100 mm
Discharge outlet diameter	22/28/32 mm
Max. incoming temperature	35 °C
Voltage - Frequency	220-240 V - 50-60HZ
Motor Power	400 W



## Case Study

Brady Main, an engineering manager at Forest River, successfully remodeled his basement in Elkhart, Indiana, by installing Saniflo's Saniaccess 2 system to add a half bath and full bar. Faced with the high costs of breaking through concrete for conventional plumbing, Main opted for the Saniaccess 2, an above-floor plumbing system equipped with a 0.5 horsepower pump and stainless-steel macerating blades. This system efficiently pumps wastewater 15 feet vertically and 150 feet horizontally, avoiding the need for extensive and expensive structural alterations. The installation included a rear-discharge toilet and a bar sink, all discharging through a compact 1-inch pipe. Main's prior experience with Saniflo products in RVs assured him of the system's reliability and power. The Saniaccess 2's design, featuring easy access for maintenance and minimal power consumption, proved ideal for his basement project, delivering a cost-effective and hassle-free plumbing solution that Main now recommends to others.





# BUILT-IN MACERATOR PUMPS

## Sanicompact 43

3 m  
30 m

Number of entries	1
External inlet diameter	40 mm
Discharge diameter ext.	32 mm
Voltage	220-240V
Frequency	50 Hz
Max. vertical discharge	3 m



SFA



## Sanicompact Comfort

3 m  
30 m

Number of entries	1
External inlet diameter	40 mm
Discharge diameter ext.	32 mm
Voltage	220-240V
Frequency	50 Hz
Max. vertical discharge	3 m



SFA



## Sanicompact Pro

3 m  
30 m

Number of entries	1
External inlet diameter	40 mm
Discharge diameter ext.	32 mm
Voltage	220-240V
Frequency	50 Hz
Max. vertical discharge	3 m



SFA



## Saniflush

5 m  
100m

Number of entries	2
External inlet diameter	40 mm
Discharge diameter ext.	32 mm
Voltage	220-240 V
Frequency	50-60 Hz
Max. vertical discharge	5 m



SFA



## Sanismart

3 m  
30 m

Volume de chasse	1.8/3 L
External inlet diameter	32 mm
Max. incoming temperature	35 °C
Voltage	230 V
Frequency	50-60 Hz
Max. vertical discharge	3 m



SFA



## Sanicompact Comfort +

3 m  
30 m

Number of entries	1
External inlet diameter	40 mm
Discharge diameter ext.	32 mm
Voltage	220-240V
Frequency	50-60 Hz
Max. vertical discharge	3 m



SFA







## Sanishower

4 m  
40m

Number of inlet	2
External inlet diameter	40 mm
Discharge outlet diameter	32 mm
Max. incoming temperature	35 °C
Voltage - Frequency	220-240 V - 50-60HZ
Motor Power	250 W



## Sanivite

5 m  
50 m

Number of inlet	4
External inlet diameter	40 mm
Discharge outlet diameter	32 mm
Max. incoming temperature	60°C (5 min)
Voltage - Frequency	220-240 V - 50-60HZ
Motor Power	400 W



## Sanishower Flat

3 m  
30m

Number of inlet	2
External inlet diameter	32 shower, 40 sink mm
Discharge outlet diameter	22/32 mm
Max. incoming temperature	35 °C
Voltage - Frequency	220-240 V - 50-60HZ
Motor Power	250 W



## Sanispeed

7 m  
70 m

Number of inlet	4
External inlet diameter	40 mm
Discharge outlet diameter	32 mm
Max. incoming temperature	75°C (5 min)
Voltage - Frequency	220-240 V - 50-60HZ
Motor Power	400 W



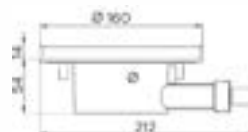
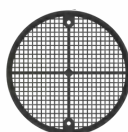
## Sanifloor + 1/2/3

3 m  
30 m

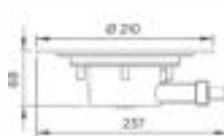
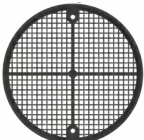
Number of inlet	1
External inlet diameter	16 mm
Discharge outlet diameter	32 mm
Max. incoming temperature	35 °C
Voltage - Frequency	220-240 V - 50-60HZ
Motor Power	400 W



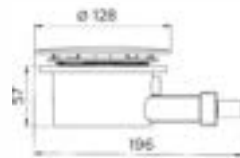
### Sanifloor + 1, for tiled floors



### Sanifloor + 2, for flexible floors



### Sanifloor + 3, for extra-flat shower trays





# SUBMERSIBLE PUMPS

## Sanipuddle

7 m ↑

Voltage	230 V
Input power P1	300 W
Immersion depth	5 m
Power cable length	10 m
Max. head	7 m
Max. flow rate ( m3/h )	5.5 mm



## Sanisub 400/800

11 m ↑

Voltage	230 V	
Input power P1	400 W	800 W
Immersion depth	7 m	
Power cable length	10 m	
Max. head	7.5 m	11 m
Max. flow rate ( m3/h )	7	15



## Sanisub ZPK 30 A

10 m ↑

Voltage	230 V
Input power P1	300 W
Immersion depth	5 m
Power cable length	10 m
Max. head	7.5 m
Max. flow rate ( m3/h )	7

## Sanisub ZPK 30 AV

10m ↑

Voltage	230 V
Input power P1	850 W
Immersion depth	5 m
Power cable length	10 m
Max. head	10 m
Max. flow rate ( m3/h )	10



## Sanisub ZPK 40 A

10 m ↑

Voltage	230 V
Input power P1	850 W
Immersion depth (m)	5 m
Power cable length	10 m
Max. head (m)	10 m
Max. flow rate ( m3/h )	10

## Sanisub S-ZPK 30/40A

10 m ↑

Voltage	230 V	
Input power P1	300 W	850 W
Immersion depth	5 m	
Power cable length	10 m	
Max. head	7.5 m	10 m
Max. flow rate ( m3/h )	7	10



## Sanisub Steel 50 A

7.5 m ↑

Voltage	230 V
Input power P1	450 W
Immersion depth	5 m
Power cable length	10 m
Max. head	7.5
Max. flow rate ( m3/h )	9







# LIFTING STATIONS

## Sanicom 1

11 m  
↑

Voltage	230 V
Power Consumption P1	750 W
Max. flow rate ( m3/h )	12
Max temperature (5 min)	90°C
External inlet diameter	40, 50 mm
Frequency	50-60 Hz
Wheel	Multichannel



## Sanicom 2

15 m  
↑

Voltage	230 V
Power Consumption P1	1500 W
Max. flow rate ( m3/h )	18
Max temperature (5 min)	90 °C
External inlet diameter	40,50,80 mm
Frequency	50-60 Hz
Wheel	Multichannel



## Sanicubic 1 WP

13 m  
↑

Voltage	230 V
Power Consumption P1	1500 W
Max. flow rate ( m3/h )	15
Max temperature (5 min)	70 °C
External inlet diameter	40, 50, 100, 110 mm
Frequency	50/60 Hz
Wheel	Grinder



## Sanicubic 2 Classic

13 m  
↑

Voltage	230 V
Power Consumption P1	1500 W
Max. flow rate ( m3/h )	15
Max temperature (5 min)	70 °C
External inlet diameter	40, 50, 100, 110 mm
Frequency	50-60 Hz
Wheel	Grinder
Alarm	Wired



## Sanicubic 2 Pro

13 m  
↑



Voltage	230
Power Consumption P1	1500 W
Max. flow rate ( m3/h )	15
Max temperature (5 min)	70 °C
External inlet diameter	40,50,100,110 mm
Frequency	50-60 Hz

## Sanicubic 2 Pro Smart

Voltage	230
Power Consumption P1	1500 W
Max. flow rate ( m3/h )	15
Max temperature (5 min)	70 °C
External inlet diameter	40, 50, 100, 110 mm
Frequency	50-60 Hz

## Sanicubic 2 Pro Smart Brushless

Voltage	230
Power Consumption P1	1500 W
Max. flow rate ( m3/h )	15
Max temperature (5 min)	70 °C
External inlet diameter	40, 50, 100, 110 mm
Frequency	50-60 Hz

Alarm	HF
Wheel	Grinder

## Case Study

The challenge involves connecting baking ovens to the main sewer to discharge wastewater created by steam from the baking process and from the automatic washing and cleaning cycles of the ovens. The restaurant is situated in a building with an existing pipeline, but not all ovens could be directly connected to the sewer system. This necessitated a Sanicom 1 that could support the discharge of very hot wastewater (70°C) to ensure proper sewage management.





## Sanicubic 1 GR HP

Voltage	220–240
Power Consumption P1	2500 W
Max. flow rate (m <sup>3</sup> /h)	19
Max temperature (5 min)	90 °C
External inlet diameter	100 mm
Frequency	50–60 Hz
Wheel	Grinder

18 m



## Sanicubic 2 GR HP

Voltage	220–240
Power Consumption P1	2500 W
Max. flow rate (m <sup>3</sup> /h)	19
Max temperature (5 min)	90 °C
External inlet diameter	100 mm
Frequency	50–60 Hz
Wheel	Grinder

13 m



## Sanicubic 1 VX

Voltage	230 V
Power Consumption P1	2000 W
Max. flow rate (m <sup>3</sup> /h)	40
Max temperature (5 min)	70 °C
External inlet diameter	40,50,100,110,125 mm
Frequency	50–60 Hz
Wheel	Vortex

13 m



## Sanicubic 2 VX

Voltage	230 V
Power Consumption P1	2000 W
Max. flow rate (m <sup>3</sup> /h)	40
Max temperature (5 min)	70 °C
External inlet diameter	40,50,100,110,125 mm
Frequency	50–60 Hz

13.5 m



## Sanicubic 2 VX T Smart

Voltage	400 V
Power Consumption P1	3500 W
Max. flow rate (m <sup>3</sup> /h)	55
Max temperature (5 min)	70 °C
External inlet diameter	40,50,100,110,125 mm
Frequency	50–60 Hz

18 m



Wheel	Vortex
-------	--------

## Sanicubic 2 VX S Smart

Voltage	230 V
Power Consumption P1	2000 W
Max. flow rate (m <sup>3</sup> /h)	40
Max temperature (5 min)	70 °C
External inlet diameter	40,50,100,110,125 mm
Frequency	50–60 Hz

13.5 m



## “ Case Study

The challenge involves managing a large sewage discharge from toilets and lavabos in both the female and male washrooms, where there is no space below the toilets and the sewage pit is 50 meters away, with a vertical distance of more than 9 meters to the lower floor. The solution is to install three Sanicubic 2 VX units, which can handle the high volume of sewage. These units use airtight pipes to prevent pollution, with wastewater inlets and outlets that discharge sewage outdoors. The powerful macerators in the Sanicubic 2 VX can pump the macerated wastewater and sewage up to 11 meters vertically and 110 meters horizontally.







# LIFTING STATIONS



SFA

22 m



## Sanicubic 1 GR SE71.1 S

Voltage	400 V
Power Consumption P1	2 200 W
Max. flow rate (m <sup>3</sup> /h)	17
Max temperature (5 min)	55 °C
DN inlets diameter	50, 100 mm
Frequency	50-60 Hz

22 m



## Sanicubic 1 GR SE71.1 T

Voltage	400 V
Power Consumption P1	2 100 W
Max. flow rate (m <sup>3</sup> /h)	17
Max temperature (5 min)	55 °C
DN inlets diameter	50, 100 mm
Frequency	50-60 Hz

Wheel

Grinder

25 m



## Sanicubic 1 GR SE71.2 T

Voltage	400 V
Power Consumption P1	2 100 W
Max. flow rate (m <sup>3</sup> /h)	17
Max temperature (5 min)	55 °C
DN inlets diameter	50, 100 mm
Frequency	50-60 Hz

35 m



## Sanicubic 1 GR SE71.3 T

Voltage	400 V
Power Consumption P1	3 900 W
Max. flow rate (m <sup>3</sup> /h)	17
Max temperature (5 min)	55 °C
DN inlets diameter	50, 100 mm
Frequency	50-60 Hz

39 m



## Sanicubic 1 GR SE71.4 T

Voltage	400 V
Power Consumption P1	3 900 W
Max. flow rate (m <sup>3</sup> /h)	17
Max temperature (5 min)	55 °C
DN inlets diameter	50, 100 mm
Frequency	50-60 Hz

22 m



## Sanicubic 2 GR SE71.1 S

Voltage	400
Power Consumption P1	2 100 W
Max. flow rate (m <sup>3</sup> /h)	17
Max temperature (5 min)	55 °C
DN inlets diameter	50, 100 mm
Frequency	50-60 Hz

25 m



## Sanicubic 2 GR SE71.2 T

Voltage	400
Power Consumption P1	2 100 W
Max. flow rate (m <sup>3</sup> /h)	17
Max temperature (5 min)	55 °C
DN inlets diameter	50, 100 mm
Frequency	50-60 Hz

SFA



Wheel

Grinder

35 m



## Sanicubic 2 GR SE71.3 T

Voltage	400
Power Consumption P1	3 900 W
Max. flow rate (m <sup>3</sup> /h)	17
Max temperature (5 min)	55 °C
DN inlets diameter	50, 100 mm
Frequency	50-60 Hz

39m



## Sanicubic 2 GR SE71.4 T

Voltage	400
Power Consumption P1	3 900 W
Max. flow rate (m <sup>3</sup> /h)	17
Max temperature (5 min)	55 °C
DN inlets diameter	50, 100 mm
Frequency	50-60 Hz



# LIFTING STATIONS

SFA



Wheel

Single Channel

## Sanicubic 1 SC3.0 T

10 m



Voltage	400
Power Consumption P1	4000 W
Max. flow rate ( m3/h )	120
Max temperature (5 min)	55 °C
DN inlets diameter	150 mm
Frequency	50-60 Hz

## Sanicubic 1 SC4.0 T

13 m



Voltage	400
Power Consumption P1	6300 W
Max. flow rate ( m3/h )	120
Max temperature (5 min)	55 °C
DN inlets diameter	150 mm
Frequency	50-60 Hz

## Sanicubic 1 SC5.5 T

18 m



Voltage	400
Power Consumption P1	6300 W
Max. flow rate ( m3/h )	160
Max temperature (5 min)	55 °C
DN inlets diameter	150 mm
Frequency	50-60 Hz

## Sanicubic 1 SC7.5 T

12 m



Voltage	400
Power Consumption P1	8700 W
Max. flow rate ( m3/h )	165
Max temperature (5 min)	55 °C
DN inlets diameter	150 mm
Frequency	50-60 Hz

SFA



Wheel

Single Channel

## Sanicubic 2 SC3.0 T

10 m



Voltage	400
Power Consumption P1	4000 W
Max. flow rate ( m3/h )	120
Max temperature (5 min)	55 °C
DN inlets diameter	150 mm
Frequency	50-60 Hz

## Sanicubic 2 SC4.0 T

13 m



Voltage	400
Power Consumption P1	5500 W
Max. flow rate ( m3/h )	140
Max temperature (5 min)	55 °C
DN inlets diameter	150 mm
Frequency	50-60 Hz

## Sanicubic 2 SC5.5 T

18 m



Voltage	400
Power Consumption P1	6300 W
Max. flow rate ( m3/h )	160
Max temperature (5 min)	55 °C
DN inlets diameter	150 mm
Frequency	50-60 Hz

## Sanicubic 2 SC7.5 T

22 m



Voltage	400
Power Consumption P1	8700 W
Max. flow rate ( m3/h )	165
Max temperature (5 min)	55 °C
DN inlets diameter	150 mm
Frequency	50-60 Hz





# PUMPS CONDENSATE REMOVAL

## Sanicondens Clim Mini S

Voltage - Frequency	220-240 V - 50-60 Hz
Max. incoming temperature	35 °C
Max. flow rate	l/h +/-15%
Max. power consumption	22 W
Discharge diameter DN	6 mm
Intlet diameter DN	16 mm
Intlet diameter DN	16 mm
Sound level	21 dB (A)



6 m



## Sanicondens Deco+

Voltage - Frequency	220-240 V - 50-60 Hz
Max. incoming temperature	35 °C
Max. flow rate	10l/h
Max. power consumption	22 W
Tank volume	175 ml
Intlet diameter DN	22 mm
Intlet diameter DN	16 mm
Sound level	< 21 dB (A)



6 m



## Sanicondens Clim Pack S

Voltage - Frequency	220-240 V - 50-60 Hz
Max. incoming temperature	35 °C
Max. flow rate	9/h +/-15%
Max. power consumption	22 W
Discharge diameter DN	6 mm
Intlet diameter DN	16 mm



6 m



## Sanicondens Eco

Voltage - Frequency	220-240 V - 50-60 Hz
Max. incoming temperature	80 °C (S315 %)
Tank volume	2,2 L
Max. power consumption	60 W
Discharge diameter DN	8-10 mm
Intlet diameter DN	28 mm
Sound level	< 45 dB (A)

4,5 m



50m

## Sanicondens Clim Deco

Voltage - Frequency	220-240 V - 50-60 Hz
Max. incoming temperature	35 °C
Max. flow rate	15 L/h
Max. power consumption	22 W
Discharge diameter DN	8-10 mm
Intlet diameter DN	16 mm
Sound level	< 23 dB (A)



6 m



## Sanicondens Pro

Voltage - Frequency	220-240 V - 50-60 Hz
Max. incoming temperature	80°C (S315%)
Tank Volume	2.2 L
Max. power consumption	60 W
Discharge diameter DN	10 mm
Intlet diameter DN	28 mm
Sound level	< 45 dB (A)

4,5 m



50m

## Sanicondens Clim Maxi

Voltage - Frequency	220-240 V - 50-60 Hz
Max. incoming temperature	35 °C
Tank volume	1 L
Max. power consumption	60 W
Discharge diameter DN	10 mm
Intlet diameter DN	28, 32 mm
Sound level	< 45 dB (A)

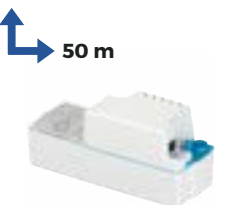
4,5 m



## Sanicondens Best Flat

Voltage - Frequency	220-240 V - 50Hz
Max. incoming temperature	80 °C (S315 %)
Tank volume	3,5 L
Max. power consumption	60 W
Discharge diameter DN	8-10 mm
Intlet diameter DN	28 mm
Sound level	< 45 dB (A)

4,5 m



50 m



Saniflo  **SFA**  
GROUP

**Export Department**

41bis Av. Bosquet, 75007 Paris

Tél : +33 (0) 1 44 82 39 20

Email: [export@sfa.fr](mailto:export@sfa.fr)

[www.export.sfagroup.com](http://www.export.sfagroup.com)